

WEEKLY REPORT

7th to 12th November 2016



MARBUZZ

the market buzz

BIDDING ADIEU FOR A **BETTER FUTURE**



Keep an Eye on Changing Market Place...



TOP STORIES THIS WEEK

- Aviation Ministry Proposes Norms On Allowing Airlines To Fly Foreign Registered Airplanes: Reuters
- World bank probe on Tata Tea finds the company failed to protect workers.
- HC of Calcutta approves amalgamation of Tata Metaliks DI Pipes with itself.
- SEBI examining relation between Tata sons and companies.
- ICICI Bank Q2 Net Profit At `3,102 Cr Vs 3030 Cr (YOY). Gross NPA At 6.82% vs 5.87% (QoQ). NII At `13639 Cr Vs `13098 Cr (YOY)
- PNB Q2 Net profit down 11.5 percent at Rs 549.4 crore versus Rs 621 crore (YoY). NII down 10.2 percent at Rs 3,879.86 crore versus Rs 4,322 crore (YoY). Gross NPA at 13.63 percent versus 13.75 percent (QoQ)
- Mylan & Biocon announces US FDA submission for proposed Biosimilar Trastuzumab.
- Cipla Q2 Cons Net Profit Down 34.8% At `354.3 Cr Vs `543 Cr (YoY) Cons Total Income Up 8.6% At `3,751 Cr Vs `3,455 Cr (YoY)
- Apollo Tyres inaugurated global R&D centre outside Chennai.
- Sun Pharma Q2: Cons Net Profit Up 90.2% At `2,235 Cr Vs `1,299.2 Cr (YoY). Cons Total Income Up 20.2% At `8,265 Cr Vs `6,873.3 Cr (YoY)

WEEKLY INDICES CHANGE

Index	Close	Prev Close	CHG(%)
SENSEX	26818	27274	-1.67
NIFTY	8296	8433	-1.62
MIDCAP	12464	12839	-2.92
SMLCAP	12485	12877	-3.04
METAL	10772	10255	5.04
OIL&GAS	11824	11689	1.15
AUTO	20562	21810	-5.72
TECK	5131	5392	-4.84
BANKEK	22604	21780	3.78
IT	9254	9789	-5.47
FMCG	8192	8507	-3.70
HC	15477	15150	2.16
PSU	7846	7572	3.62
CD	11446	12430	-7.92
POWER	1974	1958	0.82
CG	14171	14341	-1.19
REALTY	1297	1456	-10.92

GLOBAL INDICES

Index	Close	Prev Close	CHG(%)
DOW	18807	17888	5.14
NASDAQ	5208	5046	3.21
FTSE	6827	6693	2.00
NIKKEI	17374	16905	2.77
HANGSENG	22531	22642	-0.49

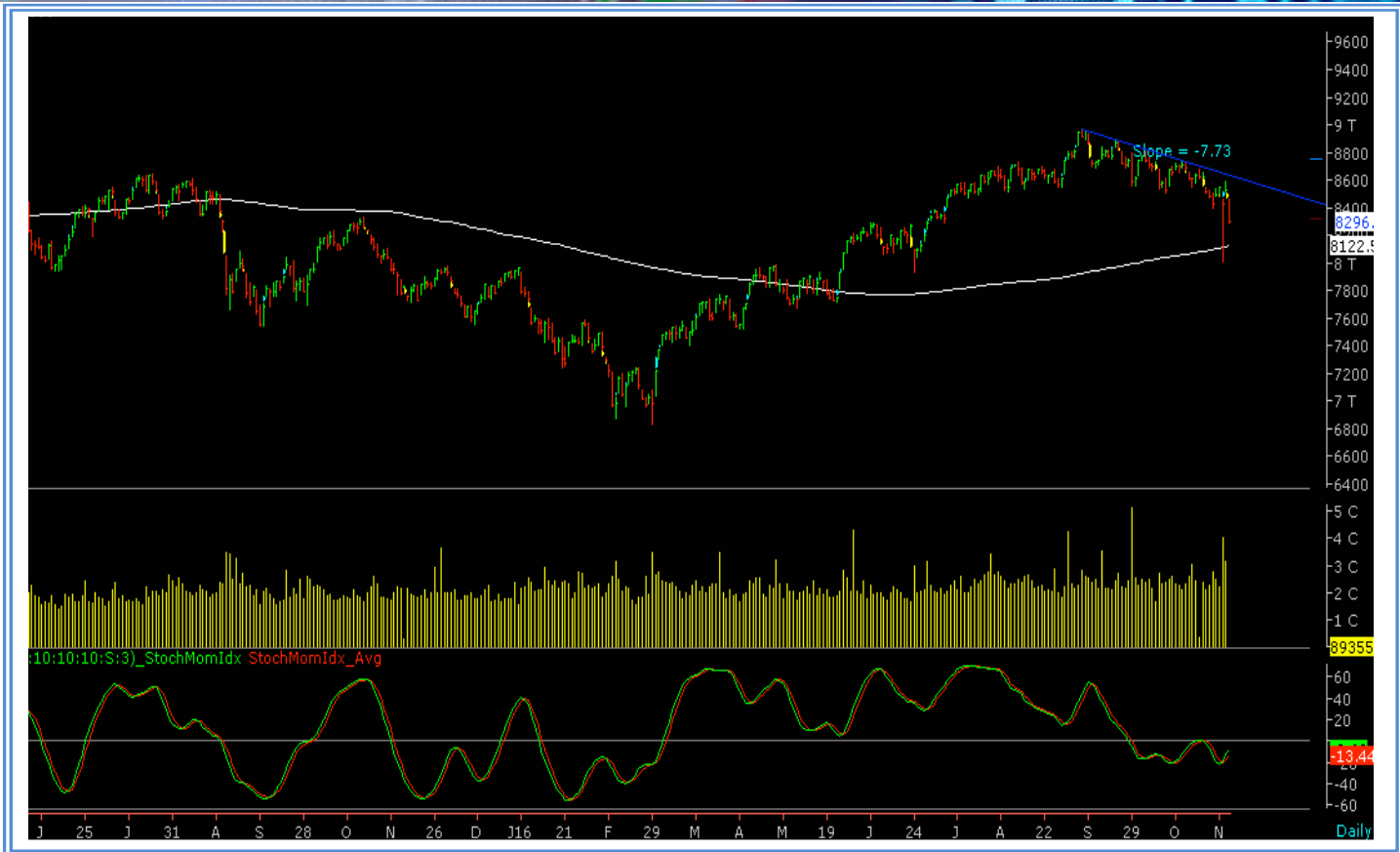
TOP GAINERS WEEKLY

Scrip	Price	% Chg
Indian Bank	250.50	21.60
Punjab National Bank	155.70	18.27
RS Software (India)	79.10	14.22
KEC International Ltd	140.75	13.97
Bank of Baroda	160.50	12.59

TOP LOSERS WEEKLY

Scrip	Price	% Chg
Delta Corp Ltd.	106.45	33.32
Store One Retail	106.95	26.80
Sunil Hitech Enginee	315.15	22.15
Cera Sanitaryware Ltd	2192.50	19.36
Muthoot Capital	269.40	19.22

NIFTY CORNER



SUPPORT & RESISTANCE

S3	S2	S1	Nifty	R1	R2	R3
7950	8100	8200	8296	8400	8550	8700

MOVING AVERAGES

20DMA	50 DMA	100 DMA	200 DMA
8575	8685	8585	8125

COMMODITY MARKET

Scrip	Close	P. Close	Change %
GOLD	29900	30557	-2.15
Silver	44166	43398	1.77
Crude	3011	2940	2.41

CURRENCY RATES

Scrip	Close	P. Close	Change %
INR- 1 USD	67.0292	66.7219	0.46
INR – 1 EURO	73.1155	74.0546	-1.27
INR- 100 YEN	62.94	64.62	-2.60
INR – 1 POUND	84.1753	83.1355	1.25

MARKET COMMENTARY

Key benchmark indices edged lower in the week ended Friday, 11 November 2016 weighed by government's black money crackdown and outcome of US presidential election. The barometer index, the S&P BSE Sensex, dropped below the psychologically important 27,000 level during the week. Key indices edged lower in three out of five trading sessions during the week. Republican Donald Trump pulled off a dramatic win to defeat Democratic contender Hillary Clinton in one of the most bitterly contested US Presidential battles. Republican Donald Trump was declared as the 45th President of the United States on Wednesday, 9 November 2016. For the next week Nifty likely to trade in the range between 8400 - 8550 in the upper side and 8200 - 8100 in the lower side.

STOCKS AT 52 WK HIGH

Scrip	CMP
City Union Bank	148.85
Hindalco	172.30
SBI	273.00
Tata Steel	426.50
Vakrangee	261.15

FII ACTIVITY

DATE	FIGURES IN CRORE
07/11	311.18
08/11	86.66
09/11	-2095.00
10/11	-733.49
11/11	-1493.27
NET	-3923.92

WEEKLY STOCK IDEA

Scrip	B/S	CMP	TGT
AJANTPHARM (FUT)	S	1820	1745
L&TFH (FUT)	S	95	85
CENTURYTEX (FUT)	S	813	785
DHFL	B	251	265
IBREALEST	B	72	78

STOCKS AT 52 WK LOW

Scrip	CMP
GlaxoSmithKline	2643.90
Noida Toll	12.80
Sita Shree Food	8.40
Speciality Restaurant	80.90
TCS	2101.15

DII ACTIVITY

DATE	FIGURES IN CRORE
07/11	779.86
08/11	294.06
09/11	1116.31
10/11	639.19
11/11	64.72
NET	2894.14

VOLUME BREAKOUT STOCKS

Scrip	CMP
Global Vectra	97.00
Ipca Labs	562.00
Patel Integrated	86.55
VIP Industries	126.05
Prestige Estate	165.95

Buy on dips & Sell on rise with Stop-loss of 3%



WEEK AHEAD

MAJOR RESULTS AGM MEETING THIS WEEK:

15 NOVEMBER 2016

- PNBHOUSING
- WELSPUNIND
- HINDPETRO
- SADBHIN
- GAIL
- TATAGLOBAL
- CONCOR
- RENUKA

16 NOVEMBER 2016

- ENGINEERSIN
- SCI
- IGL
- VOLTAS

17 NOVEMBER 2016

- INFIBEAM
- DEEPAKFERT
- PETRONET

18 NOVEMBER 2016

- NBCC
- NHPC
- RCF

19 NOVEMBER 2016

- INDIACEM
- INDNIPPON

COMMODITY OUTLOOK

■ GOLD-DEC:

It has major support at 29100/28300. If it breaks 29100, then you can see levels upto 28300/27500. And on upper side major Resistance is at 30850, if it breaks it then it can move upto 31440/31995.

■ SILVER-DEC:

MCX Silver-Dec has major support at 41000/38500. If it breaks 41000, then it can fall down to 38500/36900. And on upper side it has major Resistance at 45777/47648.

■ COPPER-NOV:

Technically, MCX Copper-Nov seems too overbought. It has major support at 370, if it breaks it, then you can see levels upto 357/341. Otherwise it may retreat upto 404/414/427.

■ CRUDE OIL-NOV:

After the Crude oil inventories on 09/11/2016, it seems too weak. It has major & crucial support at 2880. If it breaks 2880 and upcoming U.S. Job data & Manufacturing data not supports it, then it may fall to 2770/2525. Otherwise it may retreat upto 3150/3366.

PRECIOUS METALS

Commodity	S2	S1	Pivot	R1	R2
Gold-Dec	27900	28700	29950	30850	31440
Silver-Dec	40200	42100	43470	44999	46777

BASE METALS

Commodity	S2	S1	Pivot	R1	R2
Copper-Nov	302.70	340.90	372.40	411.10	443.60
Zinc-Oct	146.20	161.10	170.20	179.55	186.90
Lead-Oct	132.55	139.30	144.60	151.45	156.90
Nickel-Oct	648	702	760	819	871

ENERGY

Commodity	S2	S1	Pivot	R1	R2
Crude oil-Oct	2727	2850	2970	3090	3225
Natural Gas-Oct	148	165	181	197	214

Launches



Making it easy for Women Traders/Investors and helping them achieve their financial goals, Indira Securities introduces the concept of Women Desk. Under which equipped office space, management facilities, expert guidance, advanced softwares like Advance Get, Falcon, Ace equity research, Greek option analysis etc provide charting/research facilities also to traders. Women relationship officers are also appointed here for any assistance. This trading desk is indeed a very good platform for women to become successful trader/investor in capital market.

'Ramavat House' E-15 Saket Nagar, Indore-452018

Call: 0731-4097170-173 | **Mob:** +91-9303172345 | **Toll Free :** 18001030059 | **SMS <INDIRA>** to 56070